



1. Product Name

LED100 Projector for Water Environments

2. Product Code

23008

3. Colour

White

4. Brief Description

Lower voltage projector adapted for environments such as bathrooms.

5. Contents

- 1 x LED100 Projector
- 1 x 85mm lens (attached)
- 1 x 12V DC Transformer with 1.5 metre lead

6. Snoezelen® Stimulations

- Sight

7. Best Use

This product looks most effective in a smaller, darkened environment. Projections can be made even more visually striking when used with compatible products.

8. Compatible ROMPA® Products

The LED Projector must be used with an accessory in the rear gate, typically a Wheel Rotator such as 22614 Wireless Magnetic Wheel Rotator

This projector cannot be used with the Magnetic Wheel Rotator 22335 nor the Standard Wheel Rotator 13170 as both these types of Wheel Rotators have a short cable from the motor that has a 2-pin plug on the end. LED100 Projectors supplied from January 2017 onwards no longer have two pin sockets towards the front of the projector – there is no socket to plug these older Wheel Rotators into. Each new Wireless Wheel Rotator turns the Effect Wheel automatically.

An Effect Wheel must be used in the Wheel Rotator e.g. 22365 Underwater, 22370 Sensory etc. Please see www.rompa.com for our extensive range of themed Effect Wheels.

Further accessories may be used with the Effect Wheels to move or multiply the effects e.g. 22636 Panoramic Rotator, Clip on Prism 19934.

Only use accessories intended for this projector – use of an accessory not recommended by the manufacturer could cause an accident, injury or damage. If in doubt, contact ROMPA® for advice.

Please see www.rompa.com for our range of accessories

9. Starting Up

- It is highly advisable that you read the full instructions before use.
- Choose a suitably safe location.
- Install securely using appropriate fixings.
- Place a Wireless Wheel Rotator with a wheel into the rear gate.
- Plug in power cord.
- Switch on – the appliance power switch has the symbols “O” for off and “I” for on.

10. Detailed Description

Lower voltage projector adapted for environments such as bathrooms. Compact, portable and ideally suited to the home. 20W LED-lit so low heat, low noise and minimal maintenance. Bright yet economical to run. Requires a Wireless Wheel Rotator 22614 (two if using a Distortion Wheel) and an effects wheel. Compatible with the Clip-on Prism, Panoramic Rotator and Wireless Wheel Rotators. The integral 20W LED lamp provides bright, white light and typically lasts 100,000 hours.

11. Safety

- **Always supervise the use of this product.**
- Please check the item carefully for any damage that may have occurred during shipping. If the carton appears damaged, carefully check the shipping carton for damage and be sure all accessories necessary to operate the unit have arrived intact. In case of any difficulties, please contact ROMPA®.
- It is highly advisable that you read the full instructions before use. Keep the instructions in a safe and accessible place so that can be read as required.
- This projector has a conformal coating on the internal components. Whilst this can be used in a damp environment, the projector should be kept dry and only used indoors - do not expose it to rain, moisture or liquid or place near fabrics or combustible materials. Never immerse the projector in water or liquids. Avoid damp, excessive heat, humidity, dust and vibration.
- Mount the projector in a safe and stable manner in an area that allows proper ventilation.
- Do not block the air opening of the product or drop/insert anything into this opening.
- The appliance should be situated away from heat sources such as radiators, heat registers, stoves or other appliances (including amplifiers) that produce heat.
- Make sure the cables do not represent a tripping hazard.
- Power supply cords should be routed so that they are not pinched by items placed upon or against them, also avoid sharp bends, pinches and contact with hot surfaces, paying particular attention to the point that they exit from the unit. Do not allow the power cord to be pulled.
- Do not attempt to operate this unit if the power cord is frayed or broken or if the appliance has been dropped or damaged or in the unlikely event of product failure/malfunction.
- This product is not intended to be handled – it is essentially a visual product. Some parts can become warm with use. However, a suitably responsible adult may wish to access the projector periodically to change effects.
- Do not dismantle. Take the projector to a qualified repairer when servicing is required.
- To avoid the possibility of inadvertent resetting the thermal cut-out, this appliance must not be supplied via an external switching device, such as a timer or connected to a circuit that is regularly switched on or off.
- If using an extension cord, a cord with a current rating at least equal to that of the appliance must be used. Cords rated for less amperage than the appliance may overheat.
- Switch off and unplug after use. Pull the plug out gently and with care to disconnect – do not yank on the cable to unplug.

12. Technical Specification

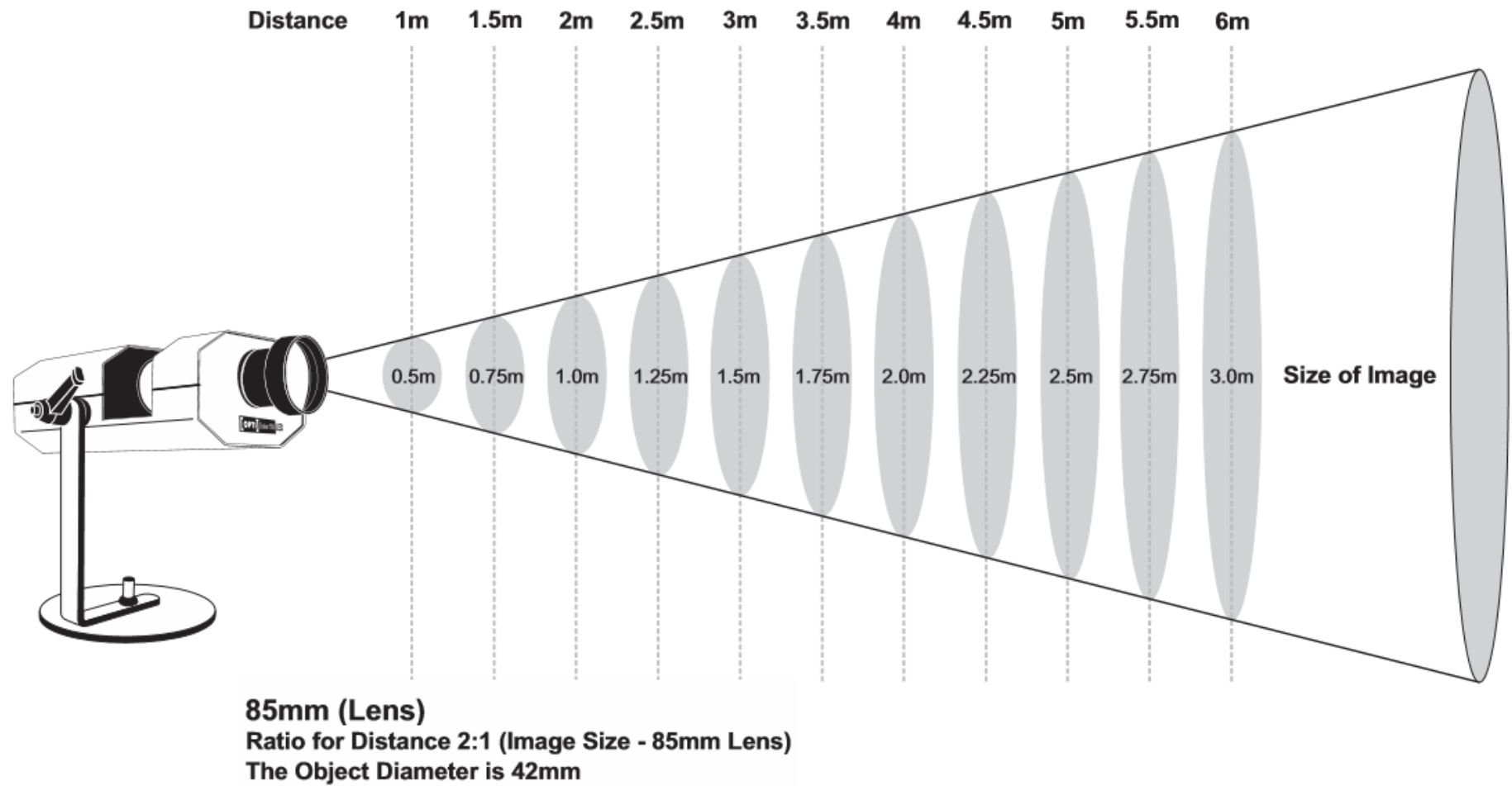
Size:	21.5L x 12.5W x 8cmH (27cmH with bracket)
Power Consumption:	24 Watts maximum
Voltage:	100 – 240V adapter (1.5m lead)
Output:	12V ~ output current: 750mA maximum
Light:	20W LED Module Average LED Module life 100,000+ hours
Weight:	Projector 1.67kg, projector and transformer 1.85kg, packed: 2.4kg
Lumens:	1200 lumens from LED; 475 lumens (on screen at approx.. 2.8m) with new module
Colour :	Colour temperature 4000° K
Standard lens:	3 element 85mm f2.8 42.5mm Helical Focus Groove
Operating:	Ambient temperature 10 to 35°C Relative humidity 80%rH max.

13. Installation

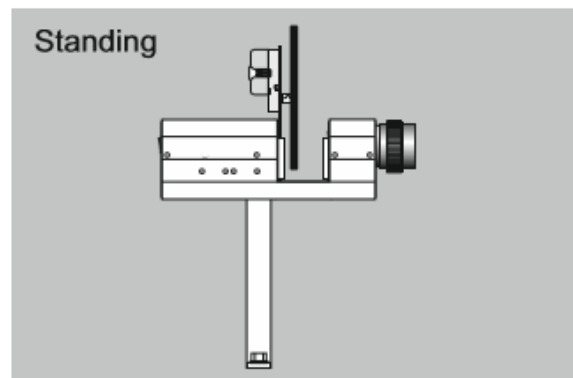
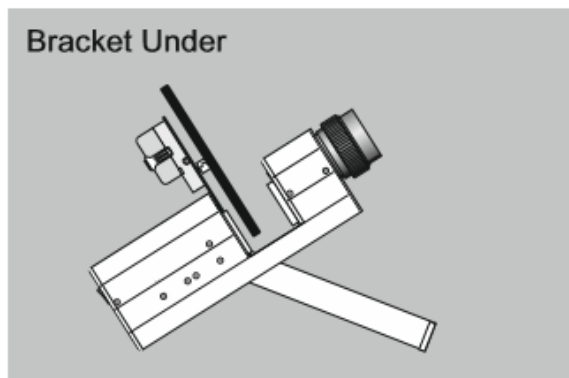
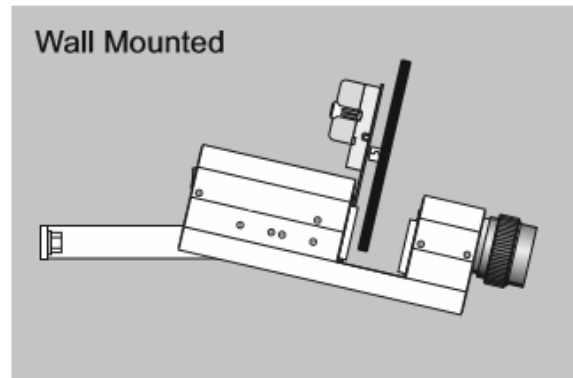
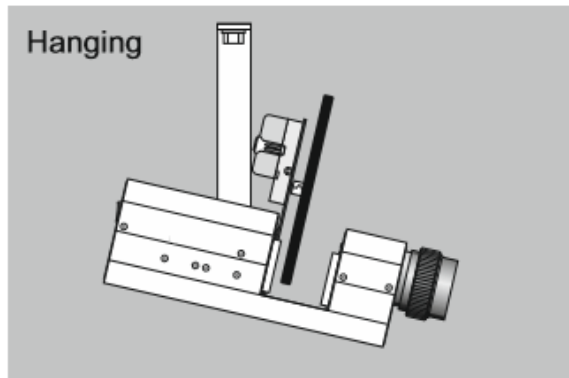
Choose a suitable location for the projector, bearing in mind the following:

- Please seek advice from a suitably qualified electrician regarding the safe installation of this projector. Installation requirements will vary according to the zones of the water environment - please refer to the BS 7671: 2008+A3:2015 Requirements for Electrical Installations 17th Edition regulations (particularly point 702.55). It may be advisable to install this in a neighbouring room and project through a Perspex screen. Install indoors in dry environments only.
- This product requires one electrical socket.
- Make sure the projection will be onto a suitable surface – a surface free of objects and that is white or pale in colour.
- The projector is a visual product and should not be handled. However, you may wish to access the projector periodically to change effects.
- There must be unrestricted airflow around the projector, especially around the air inlet grille.
- If an extension cord is necessary, a cord with a current rating at least equal to that of the appliance must be used. Cords rated for less amperage than the appliance may overheat.
- The projector must always be connected to a grounded (earthed) electricity supply.
- Only connect to a power supply with a voltage corresponding to that printed on the projector. Use the adapter fitting that is appropriate to the country where the projector is being used.
- Do not use the projector at an angle of more than 90° from horizontal as this may cause an effect or effect accessory to separate from the projector, fall and break which may also cause injury.

- Consider the following projection distances:



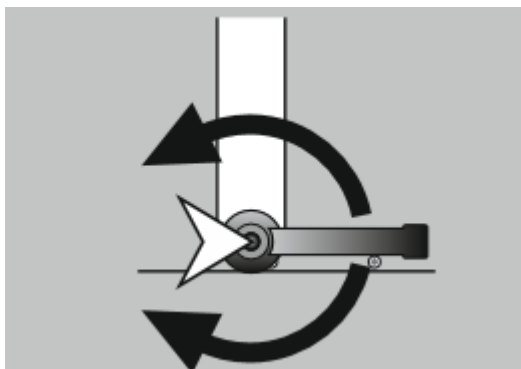
Use the projector's bracket to mount the projector in any of the following ways:



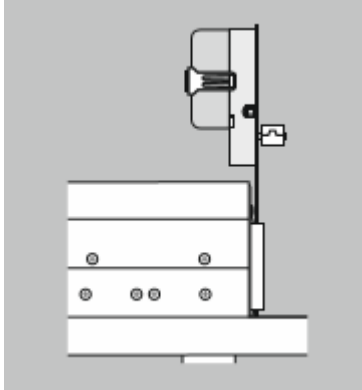
CAUTION: Never operate projector with underside lying flat on a flat surface blocking the air vent.

- Ensure that the projector is secured to a surface or structure able to bear the weight of the projector and accessories, via the bracket fitted using suitable central bolt (minimum: 14mm M10 x 20mm), washers and attachments.
- A safety chain or cable must be fitted to the projector and secured to an immovable object.
- The mounting point must be able to support the weight of the projector should it fall.

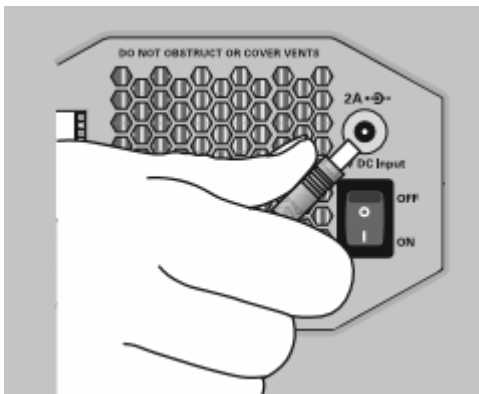
Adjust the angle and position of the effects projector using the knob which connects the bracket to the unit. Loosen the securing lever and move bracket to the desired position. Tighten lever securely. To adjust the position of the lever press the central button, pull lever away from the projector, turn to the desired position and release.



Place a suitable accessory in the projector e.g. Wireless Wheel Rotator (22614 Magnetic) with an Effect Wheel. Slide the Wireless Wheel Rotator into the rear gate runners (the main effect goes into the rear gate runners, with Distortion Wheels etc. in the front gate runners). Once the Wireless Wheel Rotator is in place, operation will begin instantly.

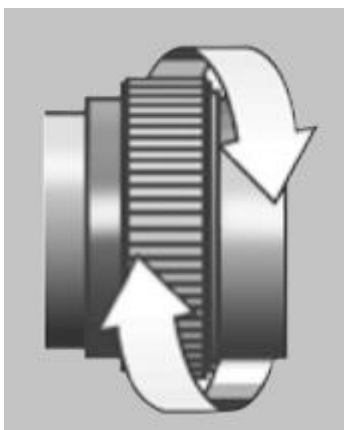


Plug the round tip of the 12V transformer into the 12V socket on the rear panel. Plug the 12V transformer into a mains socket and switch on at the wall.



Then turn the projector on by the mains switch to the "I" (ON) position. "O" is the OFF position.

Focus the projected image by twisting the lens in and out until the desired focus is achieved. During focusing beware of rotating the projection lens too far out as this can cause the lens to separate from the projector and may drop and break or cause injury.



14. Care and Maintenance

- Always switch the projector off, unplug and allow to cool before moving, storing and before all maintenance e.g. changing a fuse. If storing, wrap the cable loosely around the projector once completely cool.
- The fixture should only be cleaned with a dry cloth, ensuring the fans are free from dust.
- Use a soft tissue or lens cloth with a little methylated spirit or pure alcohol. Make sure all parts are completely dry before refitting.
- After six months (or 1000hrs) usage the optical system might need cleaning. Switch off the projector, disconnect from the mains.
- Remove the four cover plate screws and remove the cover plate. There is no need to remove the mounting bracket.
- Use a soft tissue or lens cloth with a little methylated spirit or pure alcohol to clean the focusing lens.



- Do not touch the LED module - it may fail if touched.
- Carefully re-fit the cover and replace all four screws.
- For any repairs, please contact ROMPA®. Do not attempt to repair this product yourself.
- Once this product is eventually exhausted, please dispose of it responsibly and appropriately.

15. Troubleshooting

Problem: *The Clip On Prism (or other accessory) will not fit on the front lens of the projector*

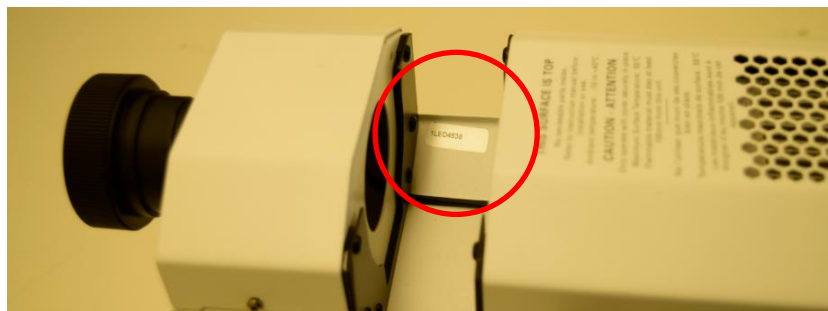
- Check that the 'click-clack' has not been removed. This is a cylindrical piece that sits inside the lens (shown below). Check that this is not still attached to the accessory that has previously been removed from the projector. Reattach this part to fit an accessory onto the front lens in order to attach an accessory.



Problem: *My Wheel Rotator has a cable with 2 pins – where does this connect?*

- Older Wheel Rotators are no longer compatible with this Projector. Please purchase a Wireless Wheel Rotator (22614 or 22613) and compatible Effect Wheels

Should you need to contact us about this product, please have the serial number to hand. This can be located as indicated below:



In the unlikely event of product failure, please contact us.

Further copies of these instructions can be downloaded at www.rompa.com

We hope you find our instructions invaluable. If you have any suggestions for improving them further your comments will be greatly received – please contact us at

producthelp@rompa.com